



Meadows House, 6 Park Street  
London SW6

GARTONJONES.COM



## Meadows House, 6 Park Street London, SW6

GARTON JONES.COM

9 Albert  
Embankment  
London  
SE1 7SP

Sales +44 (0) 20 7735 1888  
nineelms@gartonjones.com  
www.gartonjones.com

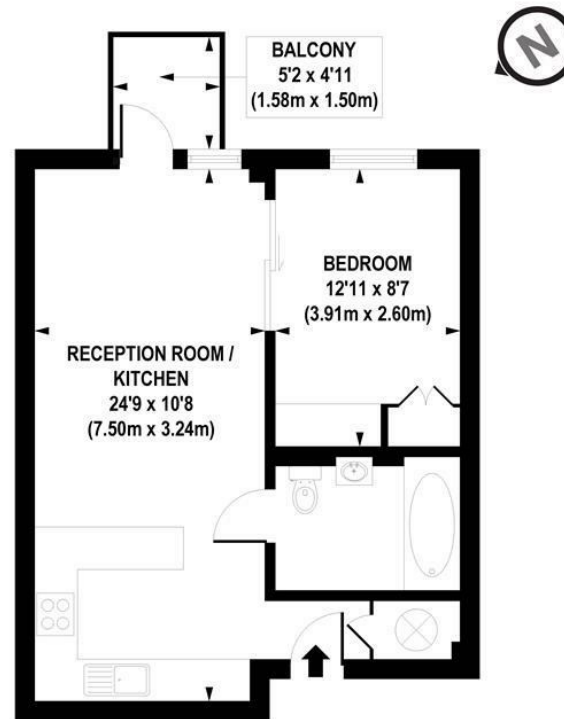
### £500 Per Week

A beautifully presented Manhattan style one bedroom apartment available to rent in Chelsea Creek. This stunning apartment is offered furnished and has been completed to a high standard. The property comprises an open plan kitchen with built-in appliances and marble worktops, a bright reception room leading into the bedroom with built-in wardrobes. There is a balcony overlooking the development and a quality bathroom with bathtub and overhead shower. The apartment benefits from good storage throughout and has underfloor heating and comfort cooling. Meadows House is part of Chelsea Creek, a sought-after development moments away from Imperial Wharf overground station and Fulham Broadway underground is also a short walk away. Residents have the exclusive use of fantastic onsite facilities including gym, swimming pool & spa facilities with a range of cafes & restaurants on your doorstep.

- Manhattan Style Apartment
- 465sq.ft (43sq.m)
- Furnished
- Storage Throughout
- Modern Development
- Residents Gym
- Swimming Pool & Spa
- Close to Imperial Wharf Station



EPC certificate available on request.



APPROX. GROSS INTERNAL FLOOR AREA 465 sq. ft / 43.18 sq. m

Floorplan is for illustrative purposes only and is not to scale.  
Every attempt has been made to ensure the accuracy of the floorplan shown, however all measurements,  
fixtures, fittings and data shown are an approximate interpretation for illustrative purposes only.  
Liability for errors, omissions or mis-statement through negligence or otherwise is hereby excluded.

**CP CREATIVE**  
PROPERTY MARKETING



